

EuroForm® JetAdvice

Tracking of precise printing costs and control of printing parameters



Track printing costs and control print parameters to optimise the use of printers and consumables with a simple, networked system using standard web protocols.

Whether you are wondering if your printers are deployed correctly, considering replacing old monochrome with new colour printers, or even simply want to optimise your spending on consumables, you are no doubt concerned about not just knowing, but also controlling your organisation's printing costs.

EuroForm JetAdvice helps you not only understand but also manage the costs of your HP LaserJet printer and MFP fleet. EuroForm JetAdvice tracks and consolidates information on printer and consumables usage to help you analyse overall printing behaviour in the optimisation of printer deployment and the identification of potential print cost savings. Then Rule-Based Printing lets you specify print parameters – executed on the printer – to implement changes consistently as you continue to track improvements.

How EuroForm JetAdvice works

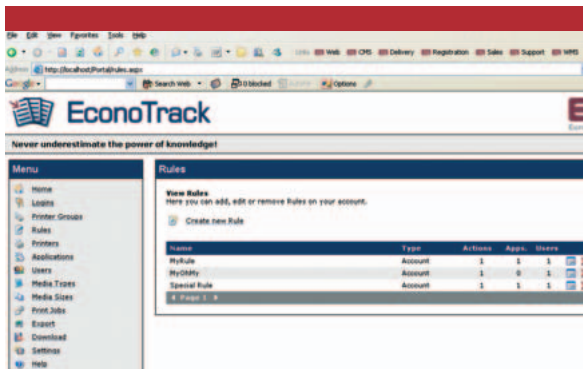
EuroForm JetAdvice is a client/server-based solution. The EuroForm JetAdvice Client is installed in the HP LaserJet printer or MFP and records print job information such as the user that printed the job, the printing application, the number of simplex/duplex pages, media size, media type, and the total toner coverage. The client sends this information to the EuroForm JetAdvice Server, which collects and collates it for all the printers and MFPs equipped with JetAdvice.

The information is then available via a web-browser for export to a Microsoft Excel, comma-separated (.csv) or Extensible Markup Language (.xml) file, for further processing and analysis.

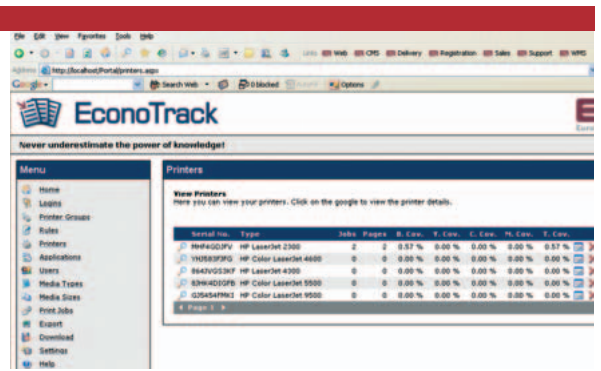
Printing rules can also be configured on the EuroForm JetAdvice Server, via the web-browser, to determine how different classes of print jobs are printed. For example, this could mean automatic colour printing in the best quality for handouts from presentation software, while e-mails are printed in black-and-white EconoMode; or double-sided printing on high quality paper for users from the marketing department, while documents from production users are single-sided on plain paper (ready for photocopying). The EuroForm JetAdvice Client pro-actively retrieves these rules from the server, and applies the Rule-Based Printing consistently in the printer to ensure the best possible adherence.

All communications are initiated and controlled by the client software using Hypertext Transfer Protocol (HTTP), which presents no greater security risk than any web-browser.





Controlling the Rule-Based Printing



Information on toner for all printers

Characteristics

- Tracks and collates job information and use of consumables for all jobs printed on JetAdvice-equipped network printers
- Provides comprehensive reports for import into Microsoft Excel or applications accepting comma-separated (.csv) or Extensible Markup Language (.xml) data
- Applies Rule-Based Printing, to control print jobs from specific users and/or applications, for example to print all jobs from a specific application double-sided in EconoMode, thereby saving both toner and paper, or to permit certain users to only print in black and white on colour LaserJet printers

Areas of application

- Increase awareness of the costs associated with workgroup peripherals
- Track costs for network printer fleets, including for use in asset usage and cost allocation applications
- Control printing costs using Rule-Based Printing, applied by user or originating application

Special features

- Printer-based client makes it possible to record the actual toner coverage of individual print jobs

Ordering information

The EuroForm JetAdvice Client runs on

- HP LaserJet 4100mfp and 9000mfp
- HP LaserJet 2300, 4250, 4350 and 9050 series printers
- HP Color LaserJet 3700, 4650, 5550 and 9500 series printers
- For information about running on earlier models, please contact your local JetCAPS partner
- The printer requires a hard disk drive, an FSA FlashDIMM or a Memory Flash Card to store the EuroForm JetAdvice Client
- Both printers and MFPs require a HP JetDirect 610N (firmware version L.20.14 or later), HP JetDirect 615N (firmware version L.22.08 or later), or HP JetDirect 620N (firmware version V.28.06 or later) card
- The EuroForm JetAdvice Server runs on Microsoft XP Professional, Microsoft Windows 2000 and Microsoft Windows Server 2003; Microsoft Internet Information Services (IIS) must be installed prior to installation of the EuroForm JetAdvice Server

A software maintenance agreement for the EuroForm JetAdvice Server is mandatory for the first year.

Note: The solution provider does not warrant the accuracy and completeness of the materials or services generated by the JetAdvice product.

© 2004 Hewlett-Packard Company

Some of the products mentioned in this brochure are developed by third-party companies – in most cases, in close co-operation with HP. The third-party company that provided the specifications and descriptions in this document, is responsible for the performance of these third-party products. All agreements, warranties or understandings take place between the respective vendors and the purchaser. All designations and product names are trademarks or registered trademarks of the respective company. This document is non-contractual. Specifications and descriptions of products can be modified at any time without prior notice.

© Hewlett-Packard Company and EuroForm, Smørum, Denmark, October 2004

For further information please visit www.jetcaps.co.uk

