



FollowMe® Version 5.0

Secure Document Output Management

FollowMe Version 5.0 is Ringdale's latest achievement in providing the most advanced secure document output management solution on the market today.

Taking its cues from customers worldwide, Ringdale updated FollowMe to meet users' requirements for increased print security and accounting. Some of the key areas of focus were on developing a web-based interface for more efficient management and an enhanced policy- and rules-based printing engine.

Key Benefits

Confidential and Secure Printing

- Print jobs are never lost
- Print jobs FOLLOW the user to their choice of output device
- Users must identify themselves at the printer before print jobs are released and printed

Seamless Consolidation of Print Devices

- Users share print devices without loss of privacy and security
- Provides a single, easy-to-use interface

Optimizes and Streamlines Printing Environment

- Can force routing of print jobs for most effective use of assets
- Saves costs on toner, paper and maintenance

An Essential Component Towards Sustainability

- Helps to reduce organizations' carbon footprint

Web-Based Administration Interface

New Navigation

FollowMe 5.0 was developed for easier user access:

- Top and left-hand navigation menus
- Enhanced content organisation

System Monitoring

With built-in system monitoring, FollowMe 5.0 provides a snapshot of the system status as well as recent activity (e.g., number of print jobs over X hours).

- Recent user activity
- Recent system events

New Version Alert

FollowMe 5.0 will automatically alert users to any system updates.

* The original Windows user interface is still supported.

Key Features

Web-Based Administration Interface

FollowMe 5.0 provides an intuitive, web-based administration interface with an easy-to-read, easy-to-navigate design for more efficient management of user controls and activity. The new version also provides a built-in help menu and "how-to's" for increased functionality and quick tips.

Language Localization

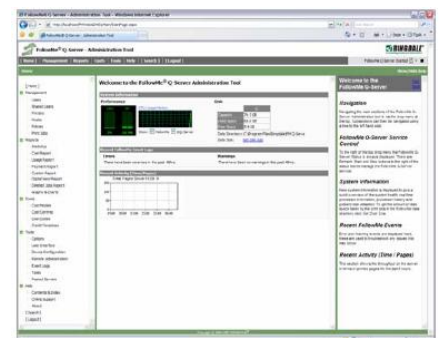
With version 5.0, FollowMe has been international-ised and translated into several different languages to support its increasing use in different geographical markets.

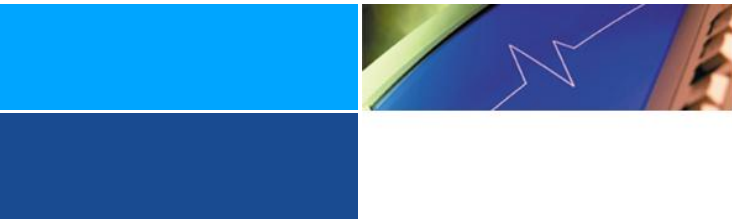
Policy and Rules-Based Printing Engine

An enhanced policy and rules-based printing engine enables stricter enforcement of user conditions, such as per page changes and tray re-mapping, which helps to meet organizations' ever changing needs.

Reporting and Charts/Graphs

FollowMe 5.0 provides new graphical reporting features that enhance organizations' ability to understand and analyze user performance as well as allocate and recover the cost of any output on a more granular level.





Policy and Rules-Based Printing Engine

FollowMe 5.0 hosts an enhanced policy and rules-based printing engine design for the next generation of print output.

Colour Access Control

Provides the ability to intelligently route black-and-white as well as colour prints from a single print queue to their correct output device.

Print Job Routing

The ability to re-route print jobs based on conditions, such as “exceeding 100 pages do not print it on a slow page per minute printer” state.

Print Job Manipulation

The FollowMe Q-Server can provide print job manipulations on the fly, such as changing print jobs from simplex to duplex as well as enforcing economy mode. Other capabilities, such as dynamically changing paper size from Letter to A4, as well as paper source, paper types and even page orientation.

Reporting

Reporting Formats

FollowMe 5.0 supports a multitude of report output formats:

- Cost – Provides a report focused on cost allocation
- Usage – Provides a report focused on device utilisation
- Payment – Provides a per user payment report
- Digital Sending – Provides a report specific to digital output
- Deleted Print Jobs – Details savings of deleted output

Statistics

FollowMe 5.0 has the ability to provide statistical data on the types of documents being printed.

Exporting of Reports

FollowMe 5.0 supports the exporting of reports to various formats:

- E-Mail - HTML based report content
- File - Comma Separated Value (CSV) format
- Including scheduling of reports

Charts and Graphs

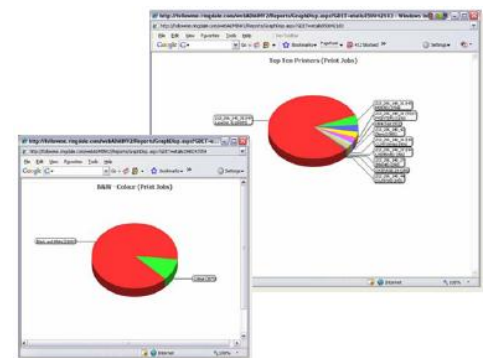
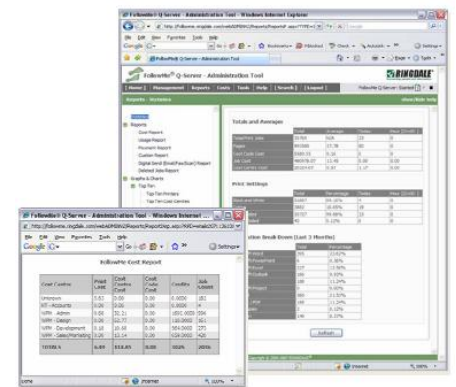
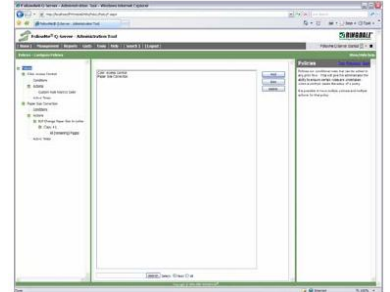
As well as providing a granular reporting engine, the FollowMe Q-Server also offers charting and graphical capabilities to compliment the reporting engine.

Comparison and Statistical

- Top 10s
- Colour vs. Black & White
- Simplex vs. Duplex
- User vs. User
- Cost Centre vs. Cost Centre
- Printer vs. Printer

Exporting of Charts and Graphs

- E-Mail - HTML based report content
- Including scheduling of charts and graphs



©2007 Bluemega Technology. All designations and product names are trademarks of the respective company. This document is non contractual. Specifications and descriptions can be modified by manufacturers at any time without prior notice.

