

Print Management Software Solution

Streamline your organisations document & transactional printing.

Documents Printing
Word documents, coral draw, power point



Transactional printing
Mailings, billings, payrolls, Invoices, reports

Reprographics Department / Print Room



R
E
D
U
C
I
N
G

D
O
C
U
M
E
N
T

&

P
R
I
N
T
I
N
G

C
O
S
T
S

Doc-Q-Route

Effective departmental print routing

Doc-Q-Route explained

Doc-Q-Route stops departmental users printing to expensive to run personal inkjet and laser printers by routing documents to more cost-effective devices.



What will I achieve with Doc-Q-Route?

- * Audit departmental users to establish who is printing excessive volumes to expensive personal inkjet and laser printers
- * Provide automatic warnings in advance of enforcing a new cost justified departmental printing solution.
- * Route document printing to a more cost effective print device.

What criteria will I be able to route on?

Number of pages
Copy count
Colour content of document
Status of the device
If document name contains "HTTP" etc.
Job or user name

Part of the Doc-Q -Suite

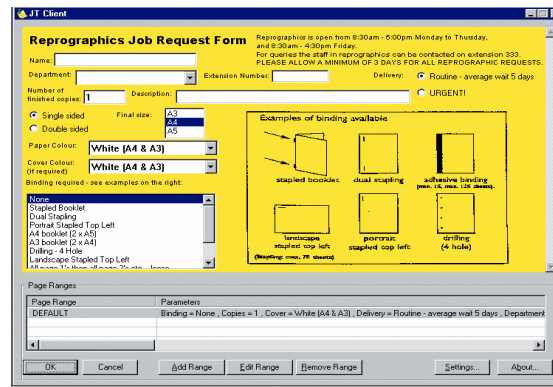
Doc-Q-Route – Doc-Q-Ticket – Doc-Q-Manager

Doc-Q-Route is the departmental part of three main software solutions, which build into a complete document and print control solution for your organisation.

Doc-Q-Ticket

Electronic Document Transfer Solution

Doc-Q-Ticket explained



Doc-Q-Ticket provides the ability to electronically transfer documents to the central reprographics department or any volume printing operation. The documents arrives at the printing operation in a print ready format combined with all the information necessary to complete the finished document.

How will Doc-Q-Ticket enhance my operation?

- * Eliminates time spent delivering hard copy documents, CD's etc. to the centralised reprographics department or print room.
- * Removes human error by forcing the sender to electronically enter all the information about how they require the document finished etc., prior to sending.
- * Reduces e-mail traffic through removing files sent as attachments to the reprographics or print room.

Part of the Doc-Q -Suite

Doc-Q-Ticket - Doc-Q-Manager - Doc-Q-Route

Doc-Q-Ticket is an electronic document transfer system delivering documents to print room / reprographics departments. Doc-Q-Ticket is part of three main software solutions, which build into a complete document and print control solution for your organisation

Doc-Q-Manager

Document and Transactional *Print Queue Management*

Doc-Q-Manager explained



Doc-Q-Manager provides queue management control for volume printing. Printing operations will benefit by being able to receive and process more documents and transactional print with increased efficiency. Additional print work will be captured and processed without having to extend working hours or take on more staff.

- * Copy, move, reprint and view print jobs to speed up processing time.
- * Automatically split colour and black & white pages to save the cost of printing the black and white pages on an expensive colour printer.
- * Impose / change the layout of the pages within a print job saving on page cost and additional imposition software.
- * Automatically batch and sort PDF's for faster printing and collating.
- * Split jobs across multiple printers to meet tight deadlines.

Part of the Doc-Q -Suite

Doc-Q-Manager - Doc-Q-Ticket - Doc-Q-Route

Doc-Q-Manager is the print room / reprographics queue management part of three main software solutions that build into a complete document and print control solution for your organisation.

SPECIFICATIONS

Doc-Q-Manager - Doc-Q-Ticket - Doc-Q-Route

Doc-Q-route server:

Notification pop-up messages require users' PC's to have Windows®
Windows® NT4 + SP6a Messenger running
To receive emails requires an accessible Windows® 2000 SMTP server
(Professional or Server)(with SP3 or above)
Windows® XP Professional
Windows® 2003 Server
IBM® compatible PC
Intel Pentium III 800MHz or higher,
doc-Q-route runs as a Windows Service
doc-Q-route admin*:
Windows®:2000
(Professional or Server)(with SP3 or above)
Windows® XP Professional
Windows®)2003 Server
IBM® compatible PC
128MB RAM, 10MB available disk space for installation
Adequate hard disk space for spool file storage (suggested 1GB)

Doc-Q-ticket client

Minimum Requirements
•Windows® 98 / Windows® NT4 + SP6a / Windows® 2000 / Windows® 2000 Terminal Server clients / Windows® XP
•IBM-compatible PC
•Windows® operating system minimum hardware requirements
•7Mb available disk space for installation
•Internet Explorer 5.0 or above

Doc-Q-manager

Minimum Requirements
Windows® NT4 + SP6a Workstation or Server / Windows® 2000 Professional or Server / Windows® XP Professional / Windows® 2003 Server
• IBM-compatible PC
• Intel PIII, 800 MHz or higher
• 128Mb RAM
• 23Mb for the installation, adequate hard disk space needed for spool file storage (suggested 1Gb)
(Windows Messenger must be running on client PCs to receive notification messages)
doc-q-ticket Forms Server / Designer
Minimum Requirements
• 7Mb of available disk space
• Internet Explorer 5.5 or above

Advanced Technologies International,
ATI House,
The Ridgeway,
Iver, Bucks
SL0 9JB,
England.
Tel. +44 (0)1753 631121
Fax. +44 (0)1753 631106
Email. dqm_info@ati-uk.com
Main website: www.ati-uk.com.

Software information websites:
www.doc-q-route.com
www.doc-q-manager.com