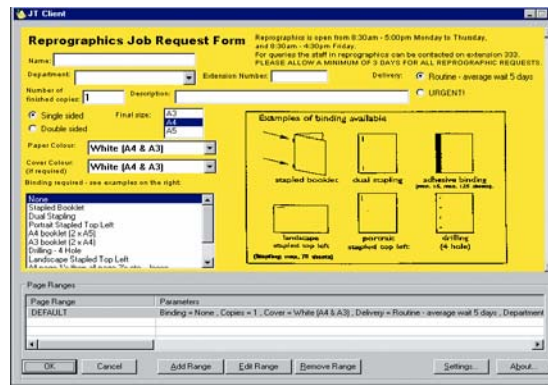


# Doc-Q-Ticket

## *Electronic Document Transfer Solution*

### Doc-Q-Ticket explained



Doc-Q-Ticket provides the ability to electronically transfer documents to the central reprographics department or any volume printing operation. The documents arrives at the printing operation in a print ready format combined with all the information necessary to complete the finished document.

### How will Doc-Q-Ticket enhance my operation?

- \* Eliminates time spent delivering hard copy documents, cd'd etc. to the centralised reprographics department or print room.
- \* Removes human error by forcing the sender to electronically enter all the information about how they require the document finished etc., prior to sending.
- \* Reduces email traffic through removing files sent as attachments to the reprographics or print room.

### Part of the Doc-Q -Suite

## *Doc-Q-Ticket - Doc-Q-Manager - Doc-Q-Route*

Doc-Q-Ticket is an electronic document transfer system delivering documents to print room / reprographic departments. Doc-Q-Ticket is part of three main software solutions, which build into a complete document and print control solution for your organisation

R  
E  
D  
U  
C  
I  
N  
G  
  
D  
O  
C  
U  
M  
E  
N  
T  
  
&  
  
P  
R  
I  
N  
T  
I  
N  
G  
  
C  
O  
S  
T  
S

## SPECIFICATION

doc-Q-ticket client

Minimum Requirements

- Windows® 98 / Windows® NT4 + SP6a / Windows® 2000 / Windows® 2000 Terminal Server clients / Windows® XP
- IBM-compatible PC
- Windows® operating system minimum hardware requirements
- 7Mb available disk space for installation
- Internet Explorer 5.0 or above
- Screen resolution at least 800 by 600

R  
E  
D  
U  
C  
I  
N  
G  
  
D  
O  
C  
U  
M  
E  
N  
T  
  
&  
  
P  
R  
I  
N  
T  
I  
N  
G  
  
C  
O  
S  
T  
S



Advanced Technologies International,  
ATI House,  
The Ridgeway,  
Iver,  
Bucks  
SL0 9JB,  
England.  
Tel. +44 (0)1753 631121  
Fax. +44 (0)1753 631106  
Email. [dqm\\_info@ati-uk.com](mailto:dqm_info@ati-uk.com)