

2005 Award Winner

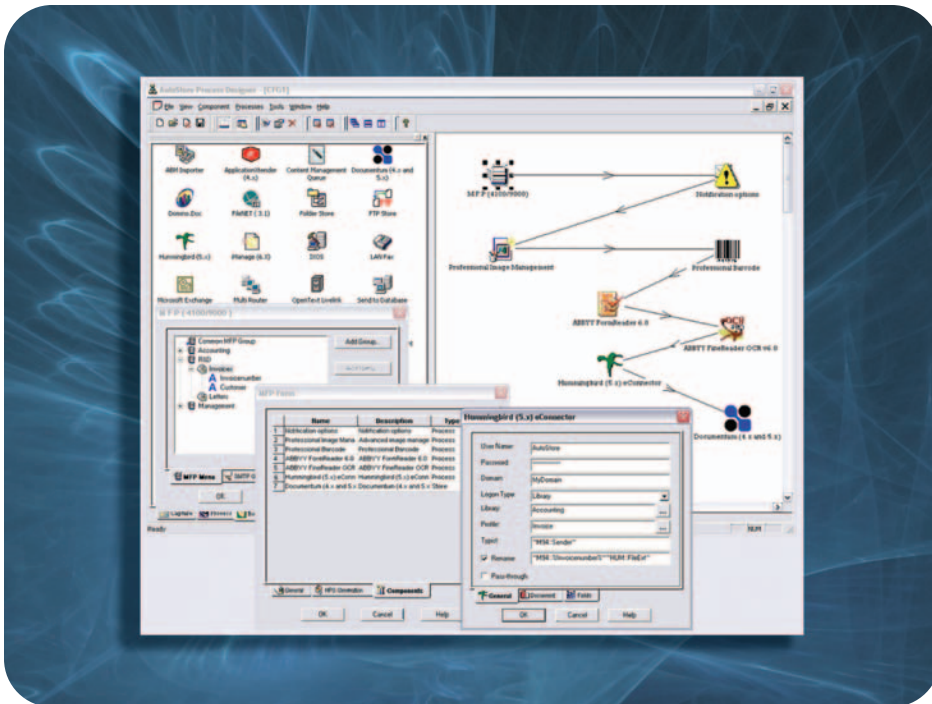


10th Annual Awards

Best Workflow Management Application

Notable Solutions, Inc. (NSi)

AutoStore



A 21st Century document imaging strategy relies on a marriage between hardware and software products. BERTL's Best Awards highlight software solutions that excel in areas including fleet management, cost control, network security, document workflow, archiving, and distribution — issues that are critical

points of decision-making in every company.

BERTL has named NSi's AutoStore "BERTL'S Best" in 2005, in the category of Best Workflow Management Application.

Automating paper processes significantly reduces administrative and physical storage costs, while sharing of electron-

ic copies of paper documents eliminates dependence on interoffice mail, couriers, or regular mail. Providing simple, structured document capture, processing and routing workflows, NSi's AutoStore provides a single platform which enables companies to concentrate on processing information instead of routing information.

Device-independent in nature, AutoStore captures both hardcopy and electronic (e.g., Word, PDF, and XLS files) documents through multiple sources including MFPs, digital copiers and scanners, e-mail, desktops, wireless devices, and fax equipment from various manufacturers.

Captured documents are recognized, tracked, and indexed — individually or in batches. Capture can be as simple as a basic scan to file task, or more complex tasks including barcode recognition and key metadata field population at the MFP touch screen.

Following capture, documents can be processed through a wide range of image enhancement and editing tools including OCR, despeckling, deskewing and much more before the final stage of the process is undertaken.

The final stage in the AutoStore workflow process involves the routing of the captured and processed document to a final

2005 Award Winner



10th Annual Awards

destination. Documents can be routed to numerous content repositories or business applications, databases, and e-mail systems. Tight integration with document management systems helps consolidate and streamline capture processes into a single action process.

Unlike some other scanning workflow utilities, NSi's AutoStore provides greater integration at the MFP interface allowing documents to be automatically routed and organized according to user input (metadata based on administrator-preset criteria) at the capture device. This metadata can include any information related to the document in order to organize it within AutoStore's framework and make it easy to later retrieve. Upon capture, the user inputs data, for instance, about the document source; customer notes, status, or regional information; billing data; model numbers or other descriptive information; and/or who last modified the document and why. AutoStore's capture, indexing, and tracking abilities also help companies achieve regulatory compliance and reduce litigation exposure.

The needs of every business are different, so AutoStore does not force documents into a restrictive, pre-built hierarchy. Instead, the application supports easy customization. Custom keys make it easy for users to code each document appropriately, which automatically routes it to the correct location. Selecting these virtual keys (e.g., Invoices or Contracts) on the device's interface screen prompts the user to answer administrator-created questions (e.g. invoice or contract number) before the document is scanned or sent. Answers to these questions form metadata for each document.

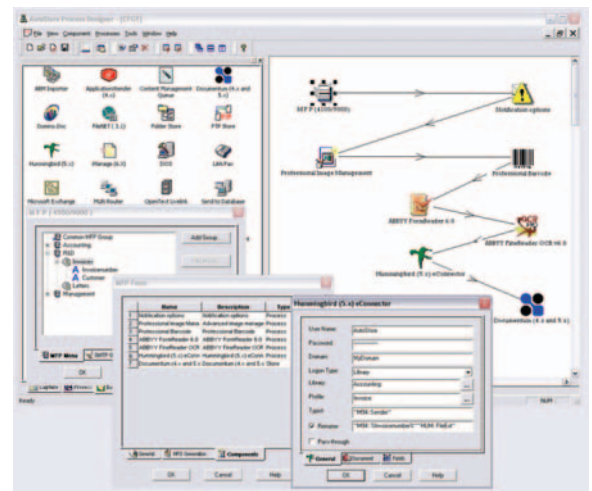
Administrators create custom keys using

AutoStore's intuitive, drag-and-drop interface and graphical representations that eliminate unnecessary complexity. Administrators may also set secure user authentication parameters not only for workflow management but also to meet regulatory concerns.

One set of capture workflows can be defined for all document and content types, both easing administrative requirements and reducing the user learning curve. Alternatively, AutoStore can be set up to automatically capture and archive content sent to a particular email address (POP3 or SMTP) or polled/monitored directory.

AutoStore directly supports select devices from Canon, HP, Konica, Kyocera, Lexmark, Ricoh, Sharp, Xerox, and others. Through NSi's collaboration with HP Labs, several HP devices are directly supported. Ricoh, Sharp, and Xerox are supported through their APIs (via C++, Visual Basic, and Java), while Canon equipment is handled through the use of Universal Send. Konica, Kyocera, Lexmark, and virtually all other devices are supported indirectly through SMTP, POP3 capture, and folder input.

The application is fully integrated and certified with Documentum D5 and ApplicationXtender, Domino.doc, SharePoint Portal Server, Hummingbird, iManage, OpenText LiveLink, Lotus Notes/Domino, and Exchange. Also featured is the ability to send documents to multiple document management applica-



Administrators utilize an easy-to-use interface to design workflows within AutoStore. Diagram also shows integration with both Documentum and Hummingbird document management applications.

tions, network folders, printers, and fax services.

While some device manufacturers offer their own capture middleware, such applications are forever wedded to the associated equipment brands. Introducing a new device from another manufacturer will cause integration problems. AutoStore, on the other hand, supports all equipment from all manufacturers so that the user can seamlessly replace existing devices without disturbing workflows. Also, compared to device-specific capture middleware requiring third-party software, AutoStore integrates content processing features such as OCR, ICR, and forms recognition.

In summary, NSi AutoStore offers organizations the ability to capture, process, and route both paper and electronic documents in a flexible, easily-programmed environment that is both richer and more functional than similar applications.

2005 Award Winner



10th Annual Awards

Spotlight on NSi

Notable Solutions, Inc. (NSi) is a privately-held information technology company based in Rockville, MD. The company was formed in 1995 by individuals with more than two decades of document and information capture experience. The company's efforts have shattered the myth of complex document capture technologies by designing its products to be easy to install, maintain, and use. NSi's goal is to enable companies to concentrate on processing information rather than routing information.

NSi's products focus on decentralized and server-based information

and document capture solutions, and have been adopted by HP and others as standard capture middleware across entire lines of MFPs and digital copiers.

AutoStore, the company's flagship family of products, forms a unified, rules-based solution to automate capturing, processing, and routing of content to a wide variety of business process applications. AutoStore can organize electronic documents according to user input, document content, or external database data.

Integrated with leading document

management applications, AutoStore provides an integrated platform enabling other third-party applications to actively participate in a consolidated process to capture content within an existing business environment.

NSi is a Microsoft Solutions provider, Lotus® Premium Business Partner, and IBM BestTeam member.

BERTL's Best

Recognizing the Best in Digital Imaging Technology and Innovation

For the 10th consecutive year, BERTL, Inc. presents BERTL's Best: the best devices and software in the digital imaging marketplace.

BERTL's Best award winners are selected after rigorous analysis of the hundreds of digital imaging devices, software, and management utilities in the world-wide marketplace.

BERTL's analysts review current product lines and new product introductions to identify the select group of devices and software that stand apart from the others.

BERTL's Best covers the entire digital imaging and document management arena:

- Executive Office MFPs
- General Office Monochrome MFPs
- Back Office Production Devices
- Wide Format Devices
- Digital Duplicators
- General Office Color MFPs
- Back Office Production Color Devices
- Document Scanners
- Software and Utilities

Plus, BERTL's Best recognizes products for cost-efficiency and innovation.

While print or copy speeds are important, it is the feature set, functionality, performance, and overall business process value that are the key considerations in judging which product is "BERTL's Best." The important question: "How well does this product work in a real-world business setting?"

BERTL combines its wide-ranging knowledge of the competitive landscape and contact with buyers about their product and supplier experiences to identify worthy products. BERTL analyzes network management utilities, concurrency and contention, print and copy productivity, image quality, return on investment, competitive advantage, accessibility, design and build quality, standard functions, modularity of design and upgrade path, installation, and more.

BERTL is 100 percent independent. It receives no funding from the industry and all product evaluations and reports are published at BERTL's own expense for its subscribers.

BERTL publishes the world's largest library of business competitive intelligence for the digital imaging market at www.BERTL.com