

CONCEPTUAL FLOWCHART
 PROCESS: Affects of bar code technology on the
 continuum of care
 PREPARED BY: HIMSS Advocacy Committee
 DATE: 4/2/02

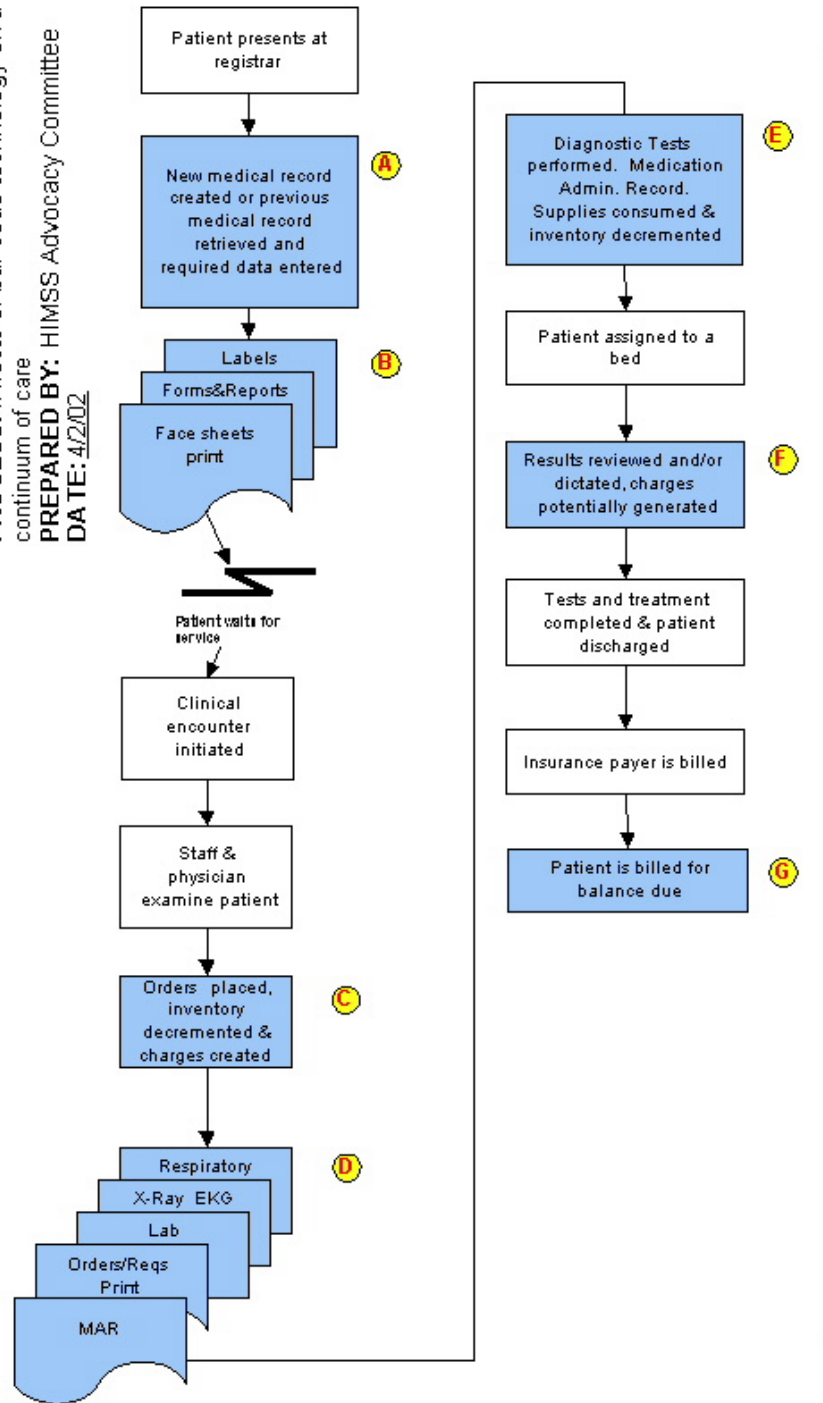


Exhibit A

Each shaded box and corresponding letter indicates when bar code technology impacts a patient during a hospital visit. Further explanation of each instance is included on the second page of this document.

Bar code technology impacts:

- Patient registration
- Order entry
- Patient identification
- Administering of Rx and Medication Administration Record
- Utilization of supplies
- Patient tracking
- Patient billing

- A** Once a patient presents for admission, bar code technology may be utilized to scan a patient ID card previously issued by the healthcare system assisting in the elimination of duplicate medical record creation.
- B** Labels (for patient arm bands and misc. forms), insurance forms and face sheets are generated upon registration and contain a patient identifying bar code.
- C** When orders are placed, the patient wrist band is scanned to ensure that orders are entered for the correct patient and on the correct account.
- D** Order requisitions are printed in various departments for the diagnostic tests ordered. Medication Administration Records (MAR) may be updated as meds are administered. Each item or med has an identifying bar code so that patient & clinician matching/tracking can be automated.
- E** As tests are performed, supplies are consumed (gauze, needles, dye, prep. materials). These items should be scanned before utilizing them, thereby assisting in tracking of inventory and charge creation. MAR may also be updated again.
- F** Bar codes should be placed on charts, films, lab reports, and specimens to facilitate proper patient identification for dictation and results delivery.
- G** Bar codes should be placed on the remittance portion of the patient bill to increase accuracy when posting patient payments in the patient accounting department.